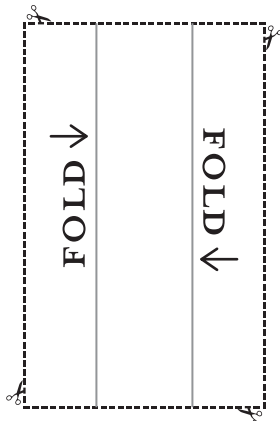
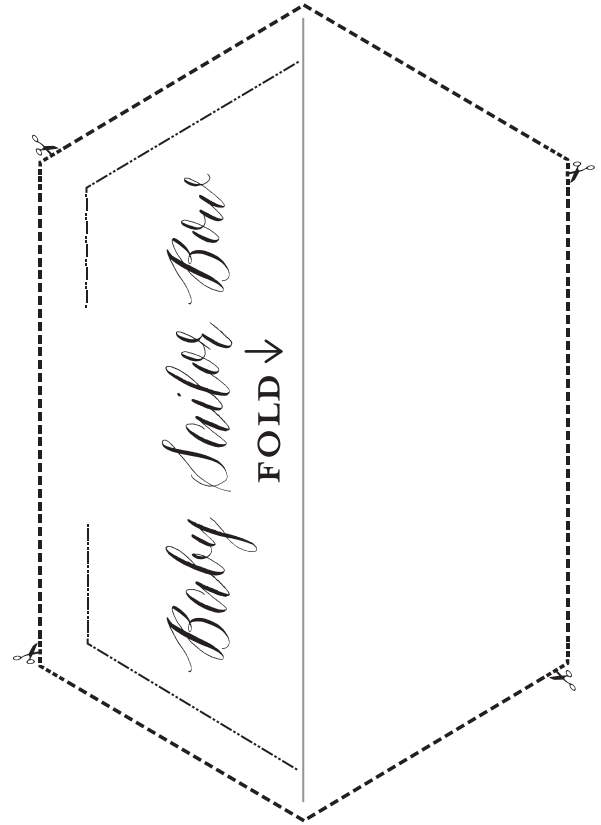
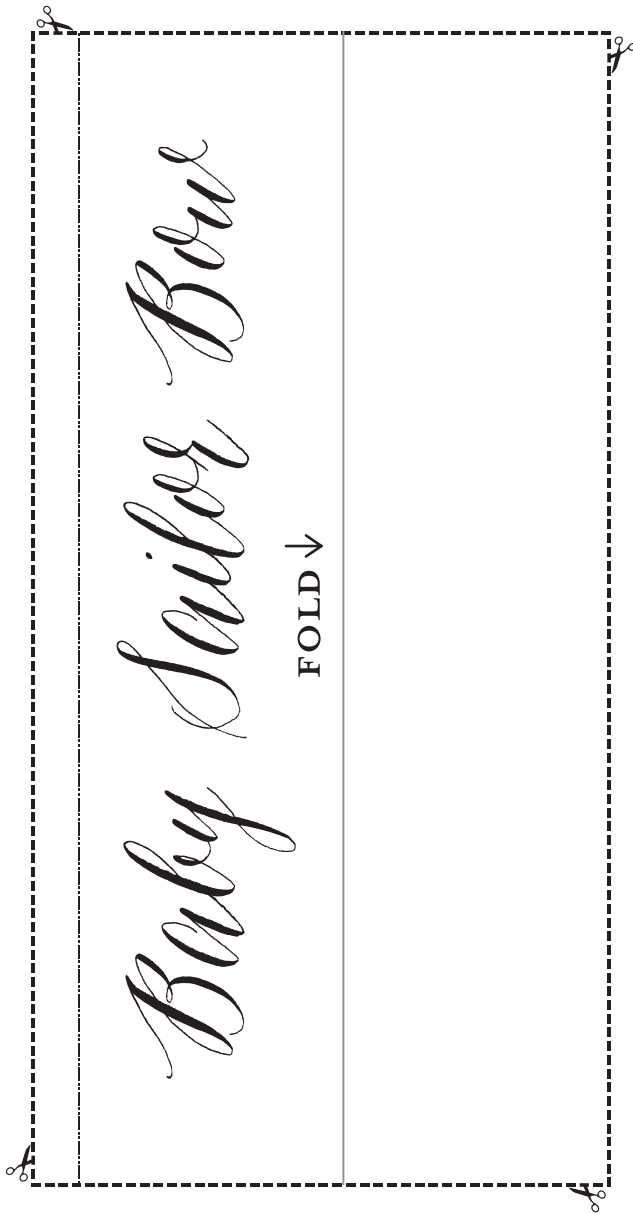


BABY SAILOR BOW PATTERN



----- CUT LINE

----- STITCH LINE

----- FOLD LINE

*1/4 INCH SEAM ALLOWANCES

*TRIM SEAMS TO 1/8 INCH AFTER SEWING

*FOR HEADBAND BAND USE A NYLON CUT TO:
1.5 INCHES WIDE

